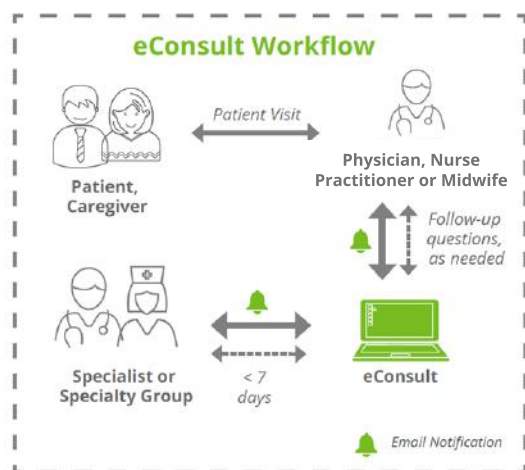


# Are you a New Physician, Nurse Practitioner or Midwife in Ontario?

eConsult is a secure web-based digital health tool that allows clinicians, nurse practitioners & midwives timely access to specialist advice for all patients, often eliminating the need for an in-person specialist visit.

## Improve access to specialist care and community services for your patients



**eConsult** is a secure web-based tool that allows physicians and nurse practitioners and midwives timely access to educational, non-urgent, patient-specific specialist advice to over 140 specialties, including dermatology, hematology and endocrinology, and often eliminates the need for an in-person patient visit. Get specialist advice for your patient fast - on average within one day (expected turnaround time is 7 days). Where applicable, you can bill OHIP using the K738 fee code.

## Benefits for Newly Graduated Physicians, Nurse Practitioners & Midwives

- **Access** to a large network of regional and provincial specialists.
- Opportunities to **prompt further learning** (from recommendations and patient-specific advice provided by experienced specialists).
- Access to digital health tools to **increase efficiency**.
- **Build provider relationships** to support patient care.
- Streamlined processes provide your patients with a **better overall care experience**.
- Opportunities to **incorporate best practices** into your clinical workflows.



"The specialist provided excellent advice which was highly educational for me. I can't say enough how helpful this was. The eConsult system really helps family physicians especially such as myself in my first year of practice. It reduces unnecessary referrals while also allowing the primary care provider to learn from cases and apply the clinical pearls moving forward. Excellent support!" - Primary Care Physician

## Send an eConsult Today!

- Check out our [videos](#) on how to send an eConsult, using your clinic workflow!
- Access eConsult today via [OTNhub.ca](http://OTNhub.ca). For support with registration, modifications to an existing account or for support with building eConsult into your clinic workflow, complete our [Intake Form](#) and a member of the eConsult team will assist you.